



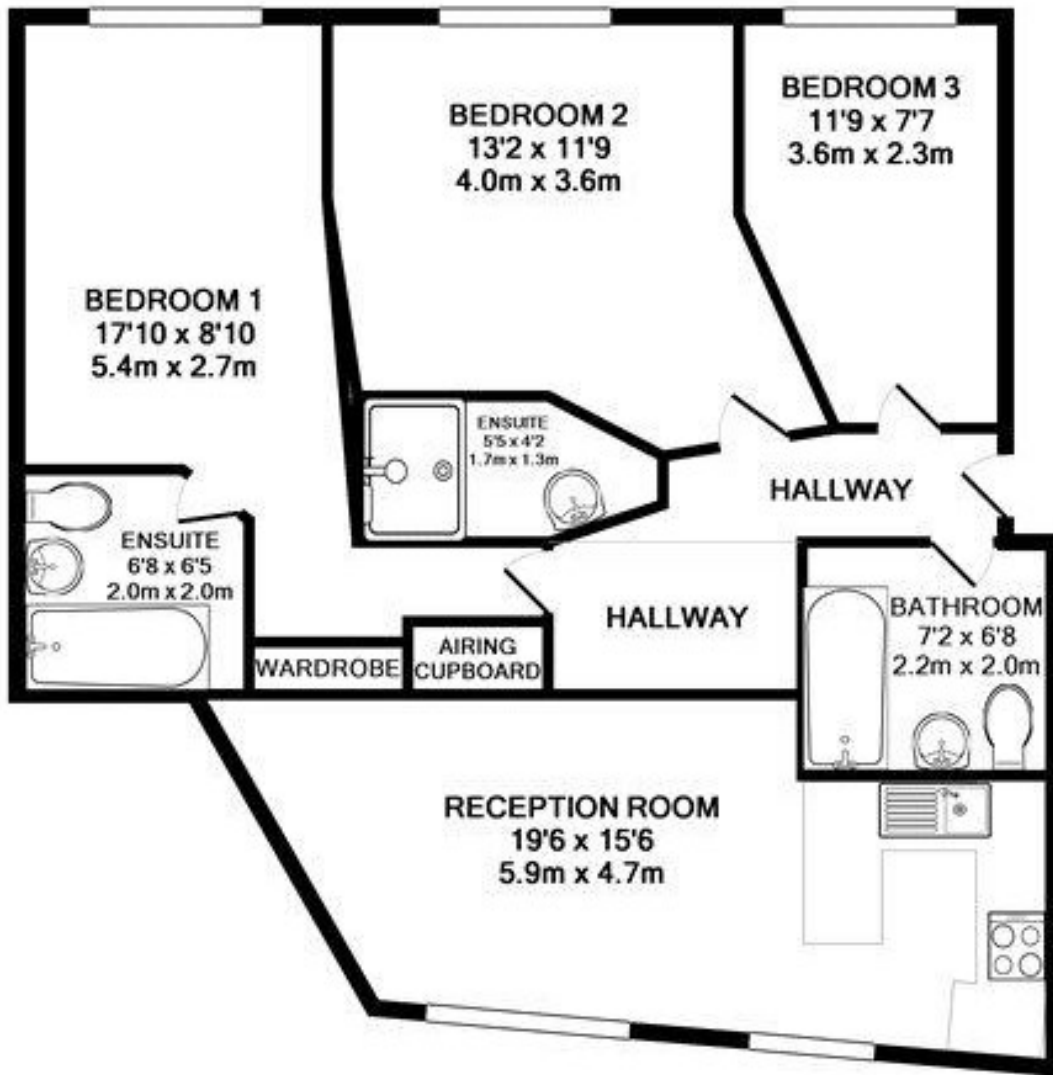
Swan Street SE1

£720,000
SHARE OF
FREEHOLD

Leonard Leese are pleased to market this superb three double bedroom property Lapwing Court SE1. Nestled moments from London Bridge, Borough Market and South Bank, the apartment boasts of a superb semi open plan living room kitchen. The property has three stunning double bedrooms and is in great condition throughout. The closest stations are Borough (Northern Line) or London Bridge (Mainline / Northern / Jubilee) and the Square Mile is located a pleasant walk over London Bridge.

Call the sales department to reserve a viewing 0207 015 1360





Energy Efficiency Rating		
	Current	Potential
Very energy efficient - lower running costs		
(92 plus) A		
(81-91) B		
(69-80) C		
(55-68) D		
(39-54) E		
(21-38) F		
(1-20) G		
Not energy efficient - higher running costs		
England & Wales	EU Directive 2002/91/EC	

Agents Note: Whilst every care has been taken to prepare these particulars, they are for guidance purposes only. All measurements are approximate and are for general guidance purposes only and whilst every care has been taken to ensure their accuracy, they should not be relied upon and potential buyers/tenants are advised to recheck the measurements

Borough Sales
230 Borough High Street
London
SE1 1JX

020 7015 1360
enquiries@leonardleese.com
www.leonardleese.com

